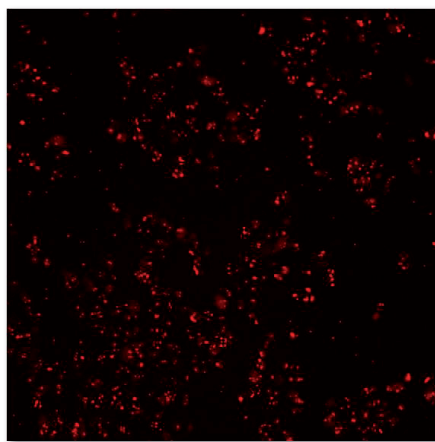


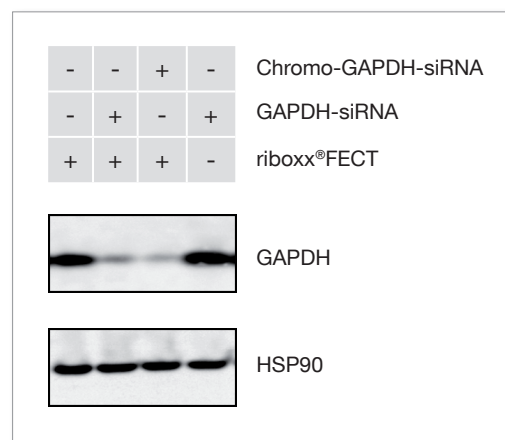
## riboxx® FECT Transfection Reagent

- Powerful transfection reagent for siRNA, RNA, miRNA
- Control of transfection and gene silencing efficiency
- For adherent cells or cells in suspension
- Perfect compatibility with riboxx® products

riboxx® FECT is a reagent dedicated for transfection of small interfering RNA (siRNA), microRNA (miRNA) and RNA in adherent cells or cells in suspension *in vitro*. By combining riboxx® FECT with the potent IBONI® siRNA, up to 90% of gene silencing is achieved. The concentrations needed to knock down gene expression range from 1 nM to 20 nM.

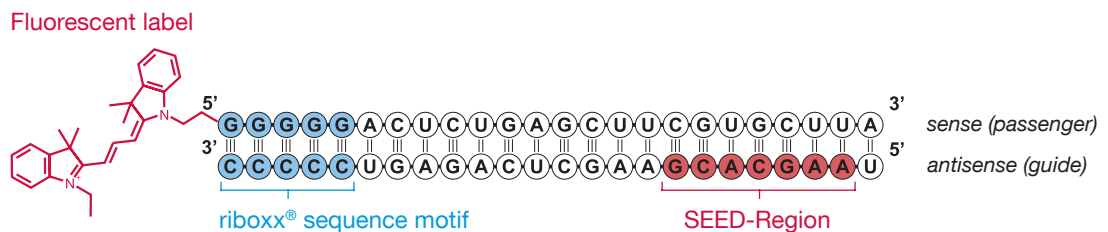


**Figure 1.** Transfection of Chromo-GAPDH-siRNA at a 20 nM concentration in HeLa cells. Detection was performed by confocal microscopy at 570 nm.



**Figure 2.** Silencing of GAPDH in HeLa cells using the Chromo-GAPDH-siRNA at a 20 nM concentration. Efficiency was compared to a GAPDH-siRNA (20 nM) not coupled to chromophore. HSP90 expression was used as a control.

## IBONI® Chromo-GAPDH-siRNA



**Figure 3.** Chromo-GAPDH-siRNA with a fluorescent label on the 5' end of the sense strand for control of transfection and gene silencing efficiency

# Cell lines for working with riboxx<sup>®</sup> FECT

## Adherent cells or cells in suspension

**H** = Human, **Ha** = Hamster, **M** = Mouse, **S** = Swine, **R** = Rat

Cell line	Cell type	Species
A549	Lung Ca	H
A375	Melanoma	H
ACN	Neuroblastoma	H
B16-F10	Melanoma	M
BT-474	Epithelial / Breast Ca	H
C2C12	Myoblast	M
C6	Glioma	R
Ca Ski	Epithelial / Cervix	H
CaCo-2	Colon Ca	H
CHL-1	Fibroblast	Ha
CHO /CHO-K1	Ovary	Ha
CL3	Lung AdenoCa	H
COLO-357	Pancreas AdenoCa	H
Du 145	Prostate Ca	H
DLD-1	Colon Ca	H
E10	Oropharynx Ca	H
GI-MEN	Neuroblastoma	H
HMEC1	Skin microvascular	H
HUVEC	Umbilical vein endothelium	H
H1568	Lung Ca (NSCLC)	H
H23	Lung Ca (NSCLC)	H
H460	Lung Ca (NSCLC)	H
HA22T/VGH	Hepatoma	H
HaCat	Keratinocyte	H
HCT-116	Colon Ca	H
HEK293 / 293T	Kidney fibroblast	H
HeLa	Cervix Ca	H
Hepa 1-6	HepatoCa	M
HepG2	HepatoCa	H
Hep3B	HepatoCa	H
HCG-27	Gastric Ca	H
hIPC	Pancreas Islets	H
HAT-1080	Fibrosarcoma	H
HAT-29	Colon AdenoCa	H
HuH-7 / -7.5	HepatoCa	H
InR1G9	Glucagon secreting cells	Ha
INS-1	Pancreatic beta cell	R
J774	Macrophages	M
K 562	Lymphoblast	M
LnCaP	Prostata Ca	H
LF1	Embryonic Lung fibrobalasts	H
Ln235	Glioblastoma	H
Ln992	Glioblastoma	H
Myeloblast	Macrophage derived	H
Mahlavu	HepatoCa	H

Cell line	Cell type	Species
MC3T3-E1	Osteoblastoma	M
MCF-7/ -10A	Breast AdenoCa	H
MDA-MB-231	Breast AdenoCa	H
MEF	Fibroblast, embryonic	M
MEL/MC2	Myeloblast	M
MG-63	Osteosarcoma	H
MGC-803	Gastric Ca	H
MH1C1	Hepatoma	R
MIN6	Insulinoma	M
MLE-12 / -15	Lunf Epithelioma	M
MM6	Myeloblast	H
MMT	Mammary Ca	M
MO59K	Glioblastoma	H
MRC-5	Fibroblast, Lung	H
MTLn3	Mammary Ca	R
NBT-II	Bladder Ca	R
Neuro 2A	Neuroblastoma	M
NIH 3T3 / -L1	Fibroblasts	M
OVCAR-3	Ovarial Ca	H
PC-3	Prostate Ca	H
Podocytes	Glomerul	M
RAW 264.7	Monocytes	M
RPE	Retinal epithelial cells	H
SAOS-2	Sarcoma	H
SHEP	Neuroblastoma	H
SH-SY5Y	Neuroblastoma	H
SiHa	Cervix Ca	H
SK-N-BE-2C	Neuroblastoma	H
SK-N-SH	Neuroblastoma	H
SKOV3	Ovarial Ca	H
SMMC-7721	HepatoCa	H
SNB-19	Glioblastoma	H
SW 480	Colon AdenoCa	H
SW 620	Colon AdenoCa	H
T47D	Breast Ca	H
T98G	Glioblastoma	H
THP-1	Acute Monocytic Leukemia	H
U2-OS	Osteosarcoma	H
U251	Glioma	H
U87	Glioblastoma	H
VCaP	Prostate Ca	H
WEHI 7	Lymphoma	M
WI38 / -26	Lung Fibroblasts	H
Wm266.4	Melanoma	H

# Cell lines for working with riboxx<sup>®</sup> FECT

## Primary cells

**H** = Human, **Ha** = Hamster, **M** = Mouse, **S** = Swine, **R** = Rat

Cell type	Species
Adipocytes	H
Astrocytes	M
Corneal epithelia cells	H
Dendritic cells (immature)	M
Epithelial, Skin	H
Embryonic stem cells	M
Endothelium, ombilical vein	H
Endothelium, aorta	R
Endothelium, brain	R
Fibroblast	H
Fibroblast, skin	H
Fibroblast, cornea	H
Glioblastoma	H
Hepatocytes	H
Hepatocytes	M
Hepatocytes	R
Keratinocytes	H
Macrophages	H
Macrophages (bone marrow)	M
Macrophages (peritoneal)	M
Melanocyte	H
Melanoma	H
Mesenchymall stem cells	M
Myoblasts	R
Neurons (emryonic cortical)	M
Neuroblastoma	H
Neurons (cortical)	R
Neurons (hippocampal)	R
Odontoblast	H
Oligodendrocyte	M
Osteoblast	M
Smooth muscle (intestine)	M
Smooth muscle (uterus)	H

# riboxx® FECT Transfection Reagent

## Ordering Information

To meet your specific experimental needs, Riboxx offers various scales of riboxx® FECT transfection reagent:

Product Name	Cat. No.	Quantity
riboxx® FECT 300	F-0300-0001	300 µl Transfect.reagent + Chromo-GAPDH-siRNA 1nmol
riboxx® FECT 600	F-0600-0001	600 µl Transfect.reagent + Chromo-GAPDH-siRNA 1nmol
riboxx® FECT 900	F-0900-0001	900 µl Transfect.reagent + Chromo-GAPDH-siRNA 1nmol

### Order

Products & Services can be ordered by:

Fax: 0049 (0)351 83 36 01-39

E-Mail: [order@riboxx.com](mailto:order@riboxx.com)

Online-Shop: [www.riboxx.com](http://www.riboxx.com)

### Support & Technical Assistance

For technical assistance please visit

[www.riboxx.com](http://www.riboxx.com)

or contact us directly:

Phone: 0049 (0)351 83 36 01-0

Fax: 0049 (0)351 83 36 01-39

E-Mail: [support@riboxx.com](mailto:support@riboxx.com)

### Other Riboxx Products & Services

#### IBONI® - *in vitro* siRNA

- Prolonged gene silencing
- Reduced off-target effects
- Gene Silencing Guarantee Service

#### IBONI® siRNA Control

- Pre-designed double-stranded RNA
- Successfully validated by independent scientists
- Positive and negative controls

#### riboxx® RNA

- 7 - 80 base pairs
- Scale up to 1 gram
- Modified or non-modified

#### riboxx® Custom siRNA Libraries

- Increased knock-down efficiency
- Enhanced RNase resistance
- Gene Silencing Guarantee service

#### IVORI® - *IN VIVO* siRNA

- Maximal gene silencing
- Enhanced serum stability
- Less toxicity

#### CONTRAmir™ - miRNA Inhibitor

- Pre-designed or custom
- Backbone modifications
- End modifications

#### CONmir™ - miRNA Mimic

- Pre-designed or custom
- Backbone modifications
- End modifications

#### Additional Services

- Design of siRNA targets
- Additional purification
- Additional quality control
- **Special services on request**